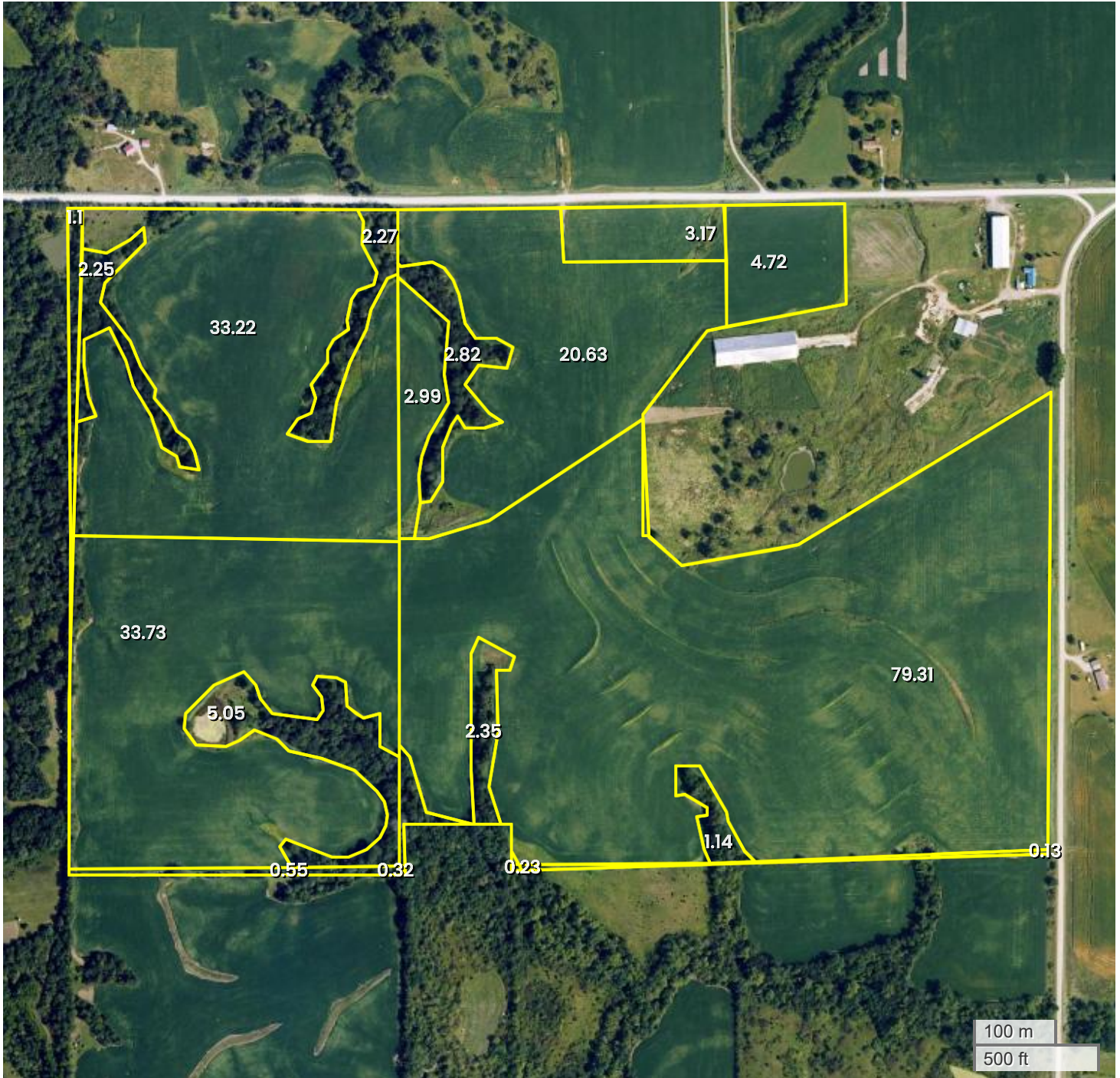




MONROE COUNTY FARM (196.27 AC TOTAL, 195.98 AC TILLABLE)

AERIAL MAP



Center: 41.099502, -92.943606

28-73N-18W

Union Township

Monroe County, IA

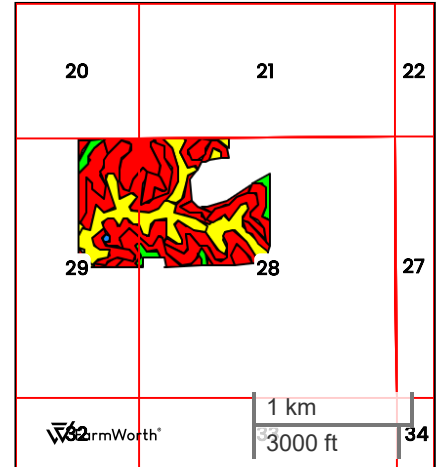
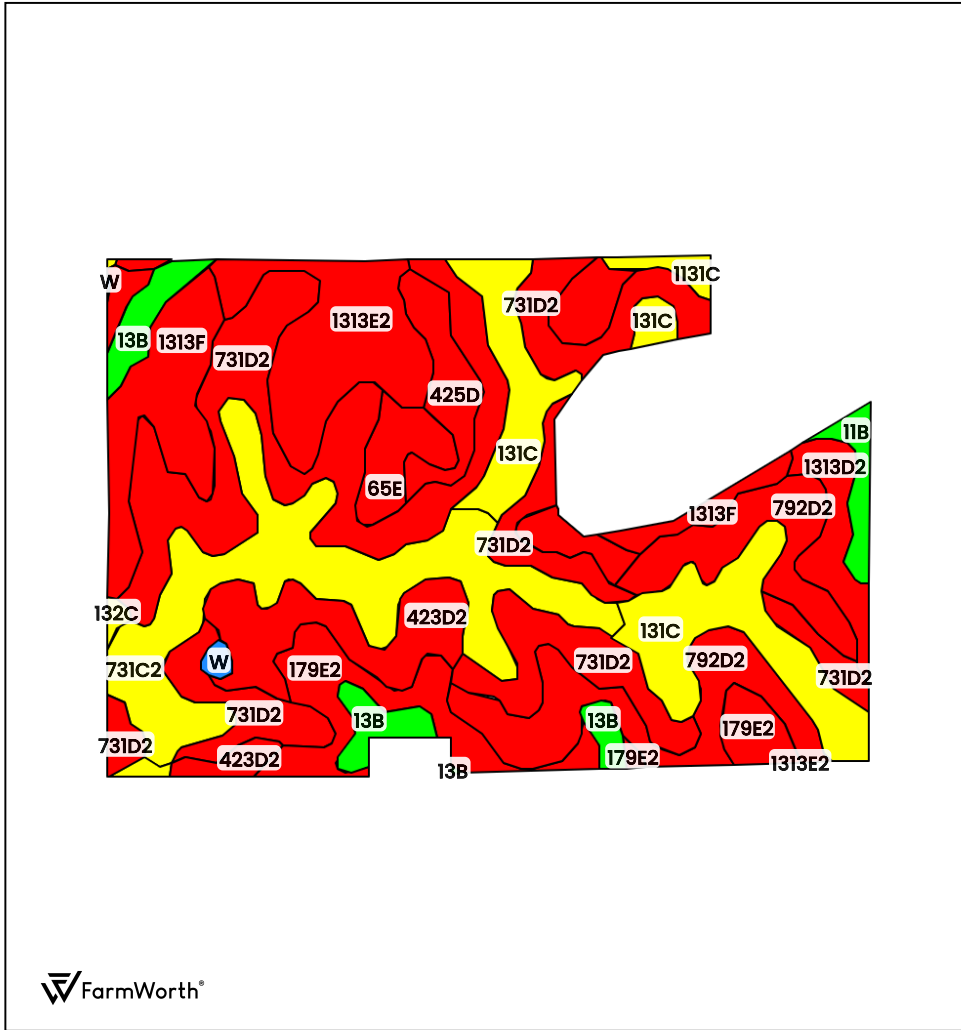


FarmWorth, LLC makes no warranties, express or implied, regarding the accuracy of any information provided through FarmWorth.com. User is solely responsible for independently verifying all information prior to use and waives any claims against FarmWorth, LLC arising from inaccuracies in such information.



MONROE COUNTY FARM (196.27 AC TOTAL, 195.98 AC TILLABLE)

TOTAL SOILS






County: **Monroe County, IA**
 Location: **28-73N-18W**
 Township: **Union**
 Acres: **196.27**
 Date: **03/17/2026**



FarmWorth, LLC makes no warranties, express or implied, regarding the accuracy of any information provided through FarmWorth.com. User is solely responsible for independently verifying all information prior to use and waives any claims against FarmWorth, LLC arising from inaccuracies in such information.

Code	Description	Acres	% of field	IA CSR2	Overall NCCPI	Soil Class (Irr)	Soil Class (Non-Irr)	Drainage Class
731D2	Pershing silty clay loam, 9 to 14 percent slopes, moderately eroded	49.64	25.29 %	38	63	-	4	Somewhat poorly drained
731C2	Pershing silty clay loam, 5 to 9 percent slopes, moderately eroded	25.94	13.22 %	62	68	-	3	Somewhat poorly drained
131C	Pershing silt loam, 5 to 9 percent slopes	20.65	10.52 %	65	73	-	3	Somewhat poorly drained
792D2	Armstrong loam, 9 to 14 percent slopes, moderately eroded	19.89	10.13 %	9	63	-	4	Somewhat poorly drained
1313E2	Munterville silt loam, 14 to 18 percent slopes, moderately eroded	16.61	8.46 %	22	56	-	6	Moderately well drained
179E2	Gara loam, 14 to 18 percent slopes, moderately eroded	13.98	7.12 %	26	62	-	6	Well drained
1313F	Munterville silt loam, 18 to 25 percent slopes	13.68	6.97 %	11	50	-	7	Moderately well drained
423D2	Bucknell silty clay loam, 9 to 14 percent slopes, moderately eroded	11.38	5.80 %	6	62	-	4	Somewhat poorly drained
13B	Olmitz-Colo-Vesser complex, 2 to 5 percent slopes	6.13	3.12 %	82	74	-	2	Poorly drained
425D	Keswick loam, 9 to 14 percent slopes	4.99	2.54 %	8	62	-	4	Somewhat poorly drained
1313D2	Munterville silt loam, 9 to 14 percent slopes, moderately eroded	4.68	2.38 %	34	59	-	6	Moderately well drained
65E	Lindley loam, 14 to 18 percent slopes	4.13	2.10 %	33	71	-	6	Well drained
11B	Colo-Ely complex, 0 to 5 percent slopes	2.36	1.20 %	86	91	-	2	Poorly drained

Code	Description	Acres	% of field	IA CSR2	Overall NCCPI	Soil Class (Irr)	Soil Class (Non-Irr)	Drainage Class
1131C	 Pershing silt loam, terrace, 5 to 9 percent slopes	1.22	0.62 %	67	71	-	3	Somewhat poorly drained
W	 Water	0.55	0.28 %	0	0	-	-	-
132C	 Weller silt loam, 5 to 9 percent slopes	0.44	0.22 %	59	88	-	3	Moderately well drained
				Average:	36.2	63.7		

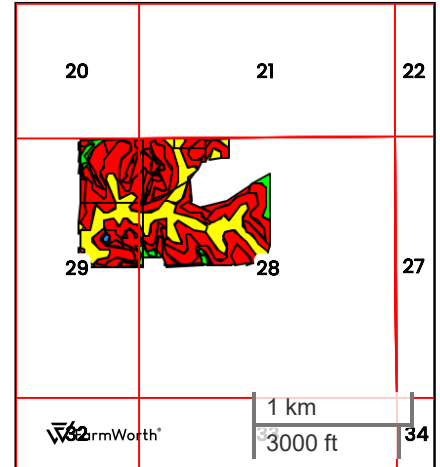
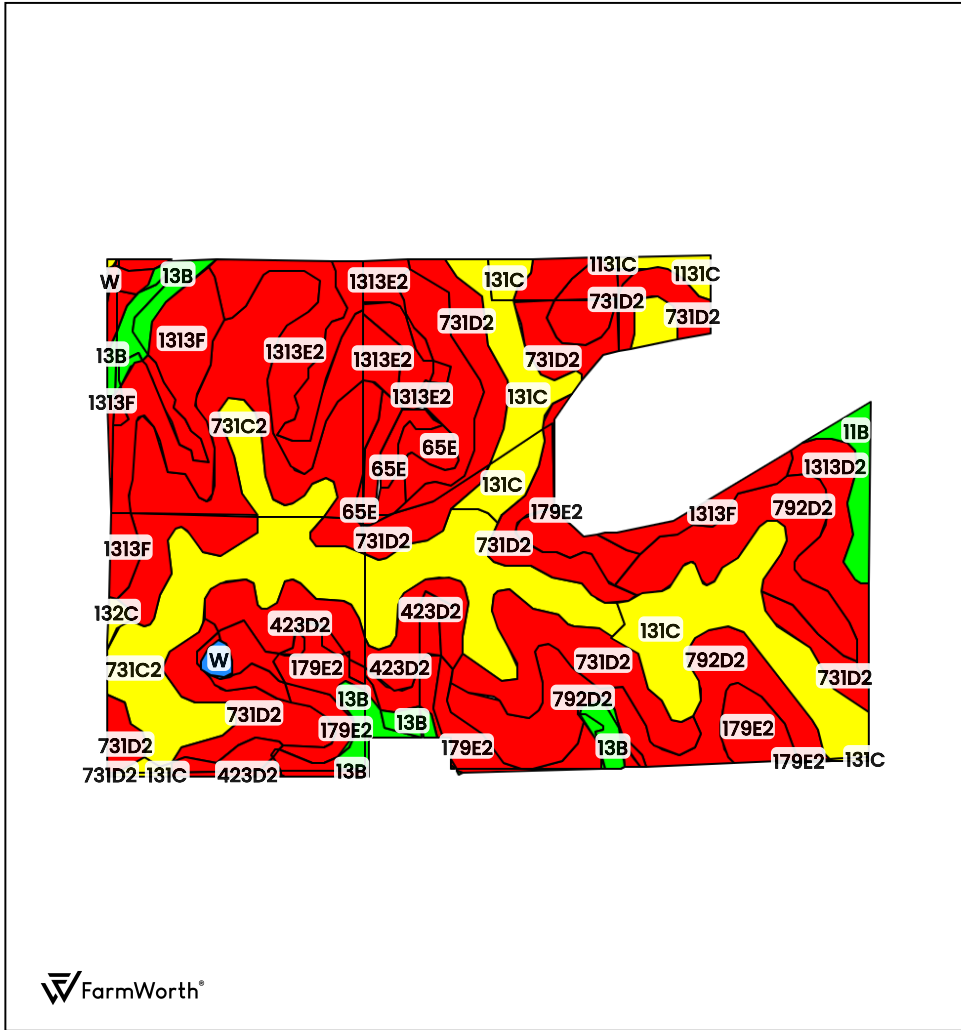
IA has updated the CSR values for each county to CSR2.

Soils data provided by USDA and NRCS.



MONROE COUNTY FARM (196.27 AC TOTAL, 195.98 AC TILLABLE)

TILLABLE SOILS






County: **Monroe County, IA**
 Location: **28-73N-18W**
 Township: **Union**
 Acres: **195.98**
 Date: **03/17/2026**



FarmWorth, LLC makes no warranties, express or implied, regarding the accuracy of any information provided through FarmWorth.com. User is solely responsible for independently verifying all information prior to use and waives any claims against FarmWorth, LLC arising from inaccuracies in such information.

Code	Description	Acres	% of field	IA CSR2	Overall NCCPI	Soil Class (Irr)	Soil Class (Non-Irr)	Drainage Class
731D2	Pershing silty clay loam, 9 to 14 percent slopes, moderately eroded	49.64	25.33 %	38	63	-	4	Somewhat poorly drained
731C2	Pershing silty clay loam, 5 to 9 percent slopes, moderately eroded	25.94	13.24 %	62	68	-	3	Somewhat poorly drained
131C	Pershing silt loam, 5 to 9 percent slopes	20.64	10.53 %	65	73	-	3	Somewhat poorly drained
792D2	Armstrong loam, 9 to 14 percent slopes, moderately eroded	19.83	10.12 %	9	63	-	4	Somewhat poorly drained
1313E2	Munterville silt loam, 14 to 18 percent slopes, moderately eroded	16.61	8.48 %	22	56	-	6	Moderately well drained
179E2	Gara loam, 14 to 18 percent slopes, moderately eroded	13.95	7.12 %	26	62	-	6	Well drained
1313F	Munterville silt loam, 18 to 25 percent slopes	13.55	6.91 %	11	50	-	7	Moderately well drained
423D2	Bucknell silty clay loam, 9 to 14 percent slopes, moderately eroded	11.39	5.81 %	6	62	-	4	Somewhat poorly drained
13B	Olmitz-Colo-Vesser complex, 2 to 5 percent slopes	6.10	3.11 %	82	74	-	2	Poorly drained
425D	Keswick loam, 9 to 14 percent slopes	4.99	2.55 %	8	62	-	4	Somewhat poorly drained
1313D2	Munterville silt loam, 9 to 14 percent slopes, moderately eroded	4.68	2.39 %	34	59	-	6	Moderately well drained
65E	Lindley loam, 14 to 18 percent slopes	4.12	2.10 %	33	71	-	6	Well drained
11B	Colo-Ely complex, 0 to 5 percent slopes	2.35	1.20 %	86	91	-	2	Poorly drained

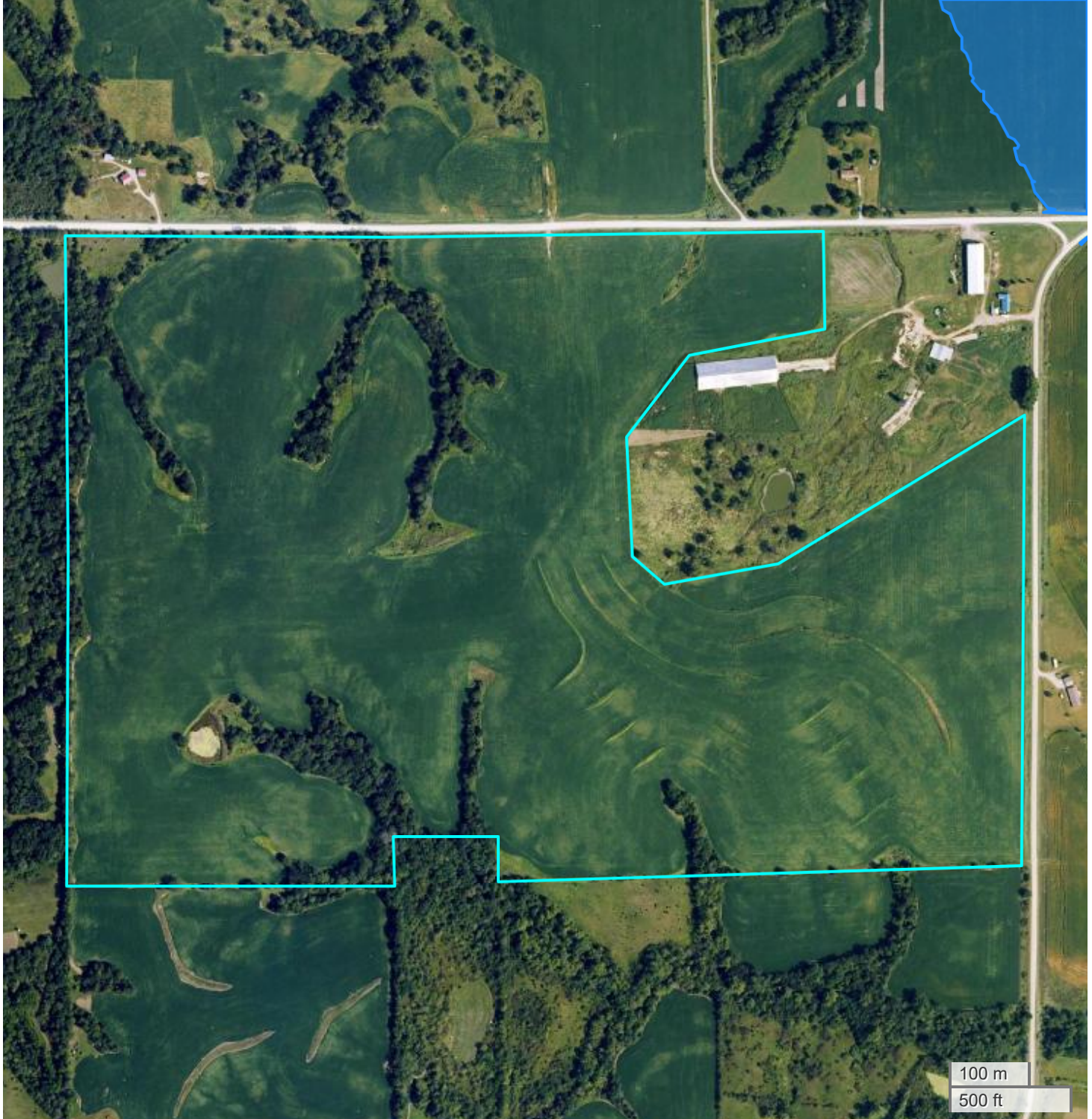
Code	Description	Acres	% of field	IA CSR2	Overall NCCPI	Soil Class (Irr)	Soil Class (Non-Irr)	Drainage Class
1131C	 Pershing silt loam, terrace, 5 to 9 percent slopes	1.21	0.62 %	67	71	-	3	Somewhat poorly drained
W	 Water	0.55	0.28 %	0	0	-	-	-
132C	 Weller silt loam, 5 to 9 percent slopes	0.42	0.21 %	59	88	-	3	Moderately well drained
				Average:	36.2	63.7		

IA has updated the CSR values for each county to CSR2.

Soils data provided by USDA and NRCS.





FLOOD HAZARDS



FarmWorth, LLC makes no warranties, express or implied, regarding the accuracy of any information provided through FarmWorth.com. User is solely responsible for independently verifying all information prior to use and waives any claims against FarmWorth, LLC arising from inaccuracies in such information.

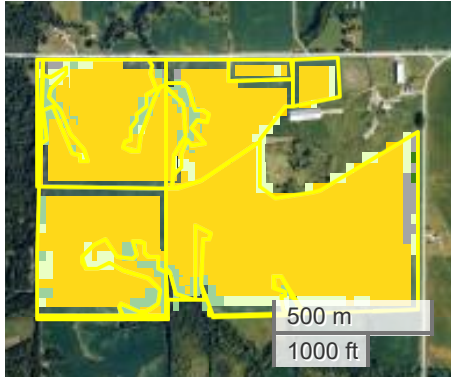
Significant Flood Hazards

-  Regulatory Floodway (Zones AE, AO, AH, VE, AR)
-  Without Base Flood Elevation (BFE), with BFE or Depth (Zones A, V, A99)

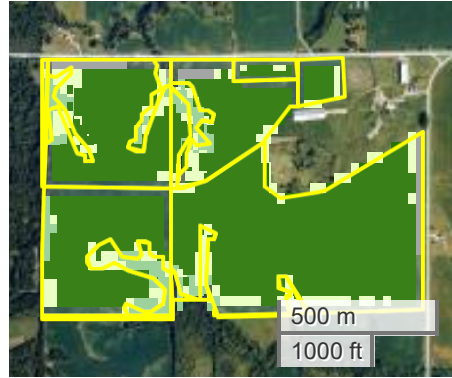


CROP HISTORY

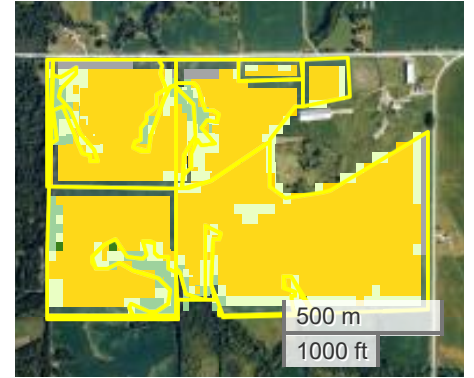
2024



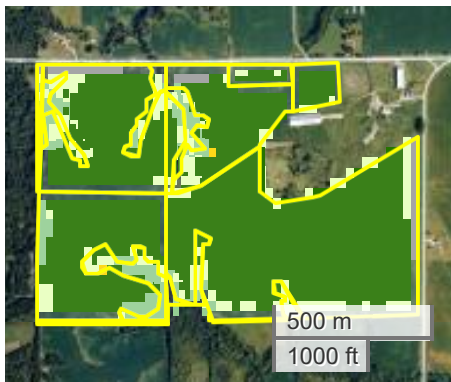
2023



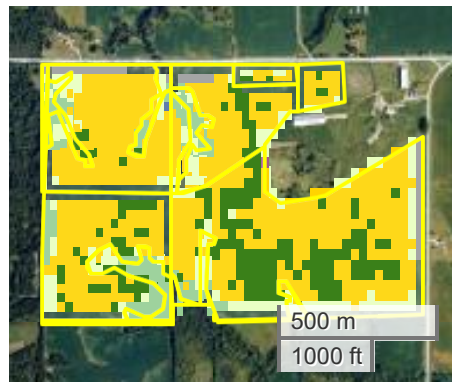
2022



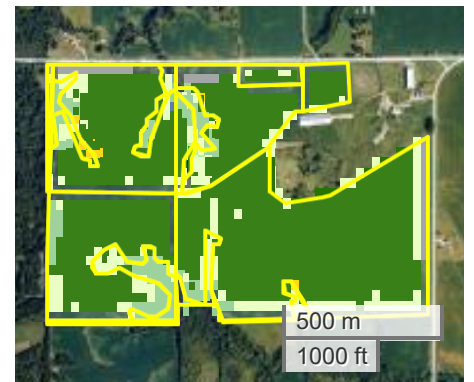
2021



2020



2019



Crop History

		Percent Area (>0.5 %)						
	Crop	2024	2023	2022	2021	2020	2019	Average
	Corn	76.7	0.0	66.1	0.2	51.5	0.7	39.1
	Soybeans	0.2	68.5	0.2	69.5	15.2	64.8	36.4
	Grass/Pasture	8.8	17.3	20.0	16.4	17.3	18.2	16.3
	Deciduous Forest	12.6	11.6	11.0	11.4	12.8	12.7	12.0
	Developed/Low Intensity	0.4	1.4	1.4	1.4	1.3	1.3	1.2
	Developed/Open Space	1.3	1.0	1.0	1.0	1.2	1.2	1.1

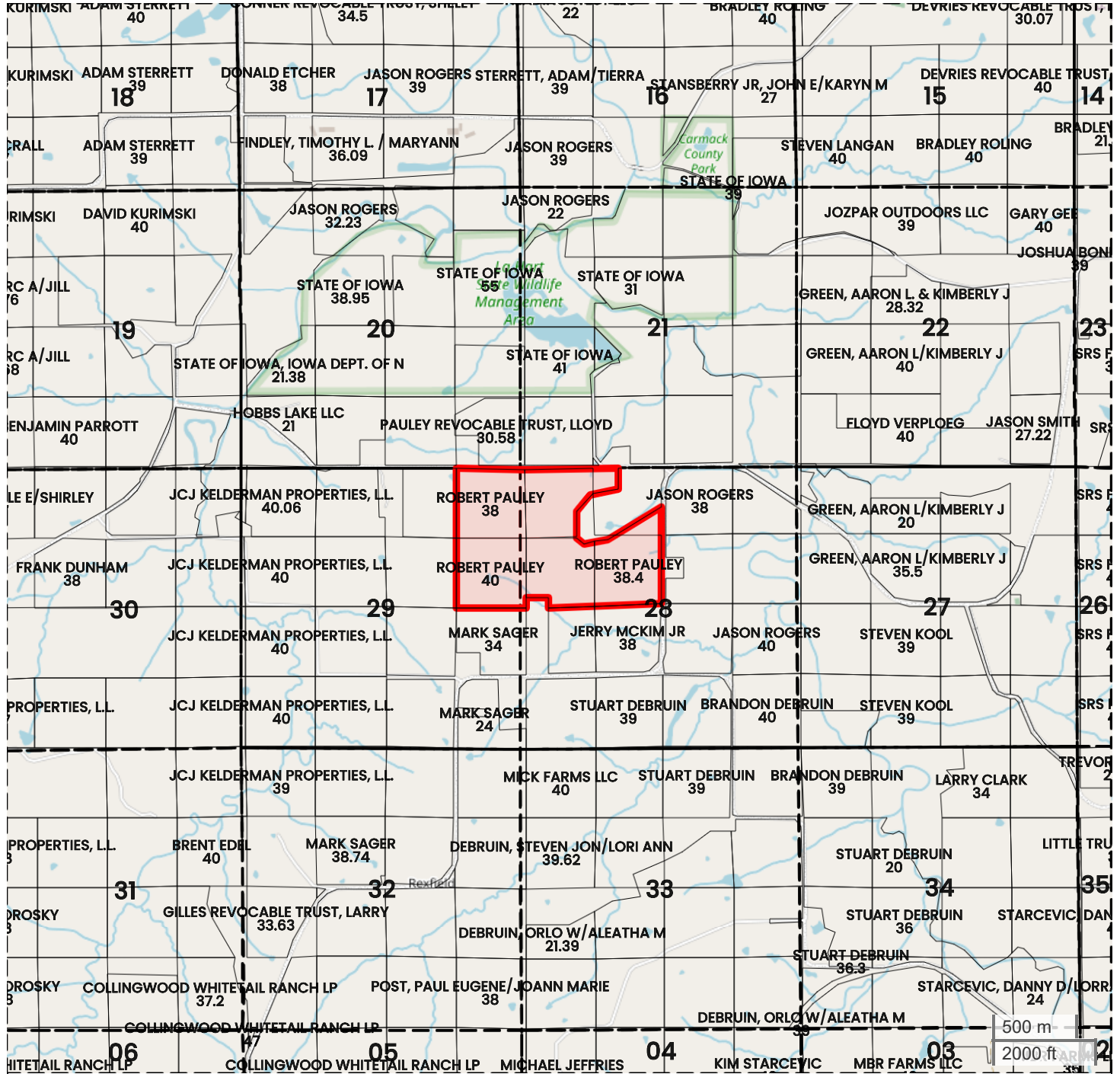


FarmWorth, LLC makes no warranties, express or implied, regarding the accuracy of any information provided through FarmWorth.com. User is solely responsible for independently verifying all information prior to use and waives any claims against FarmWorth, LLC arising from inaccuracies in such information.



MONROE COUNTY FARM (196.27 AC TOTAL, 195.98 AC TILLABLE)

PLAT MAP



Center: 41.099507, -92.943590

28-73N-18W
Union Township
Monroe County, IA

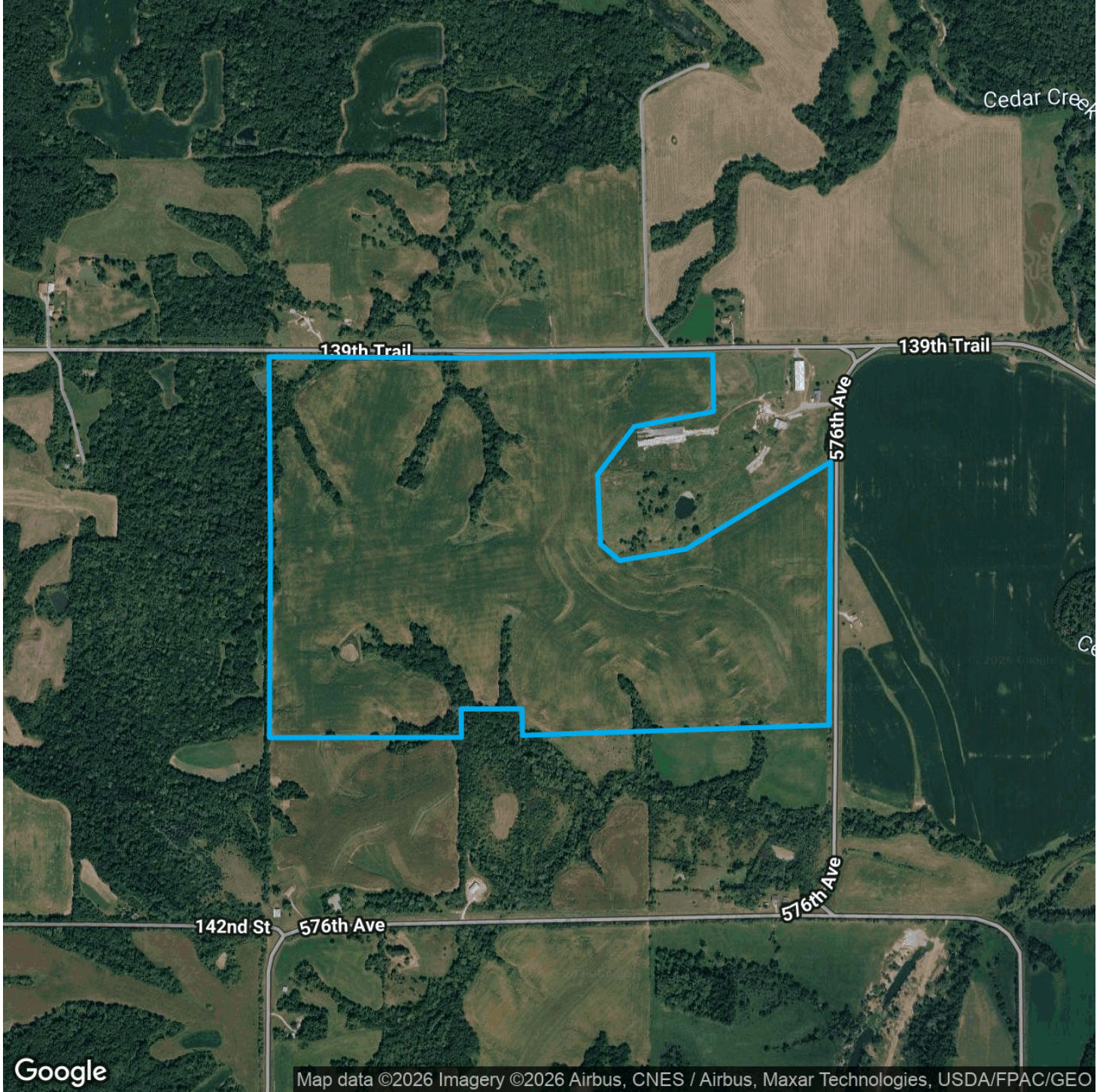


FarmWorth, LLC makes no warranties, express or implied, regarding the accuracy of any information provided through FarmWorth.com. User is solely responsible for independently verifying all information prior to use and waives any claims against FarmWorth, LLC arising from inaccuracies in such information.



MONROE COUNTY FARM (196.27 AC TOTAL, 195.98 AC TILLABLE)

PROXIMITY MAP



Google

Map data ©2026 Imagery ©2026 Airbus, CNES / Airbus, Maxar Technologies, USDA/FPAC/GEO

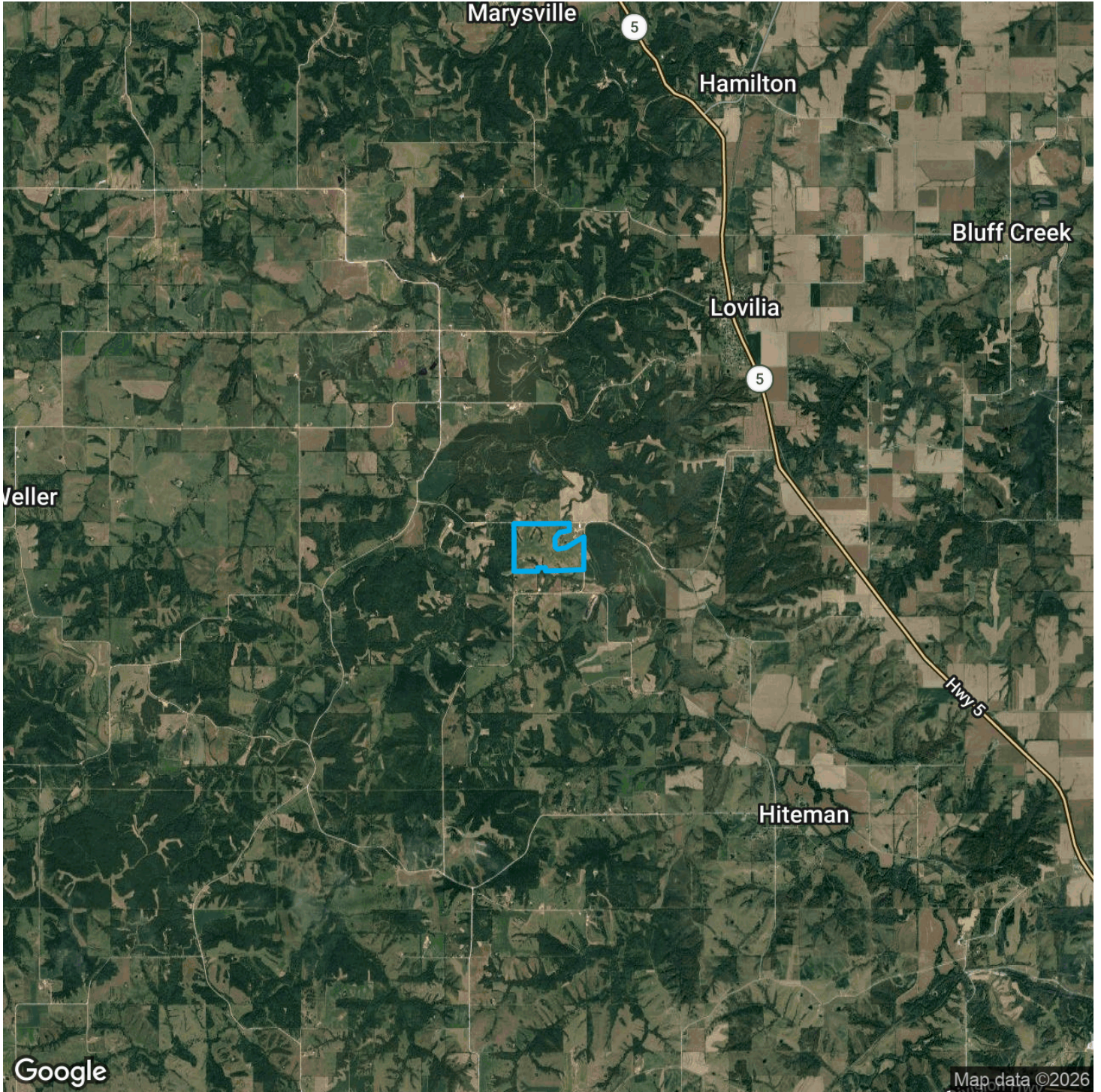


FarmWorth, LLC makes no warranties, express or implied, regarding the accuracy of any information provided through FarmWorth.com. User is solely responsible for independently verifying all information prior to use and waives any claims against FarmWorth, LLC arising from inaccuracies in such information.

 [Get Driving Directions](#)



MONROE COUNTY FARM (196.27 AC TOTAL, 195.98 AC TILLABLE)
REGIONAL MAP



FarmWorth, LLC makes no warranties, express or implied, regarding the accuracy of any information provided through FarmWorth.com. User is solely responsible for independently verifying all information prior to use and waives any claims against FarmWorth, LLC arising from inaccuracies in such information.

 [Get Driving Directions](#)



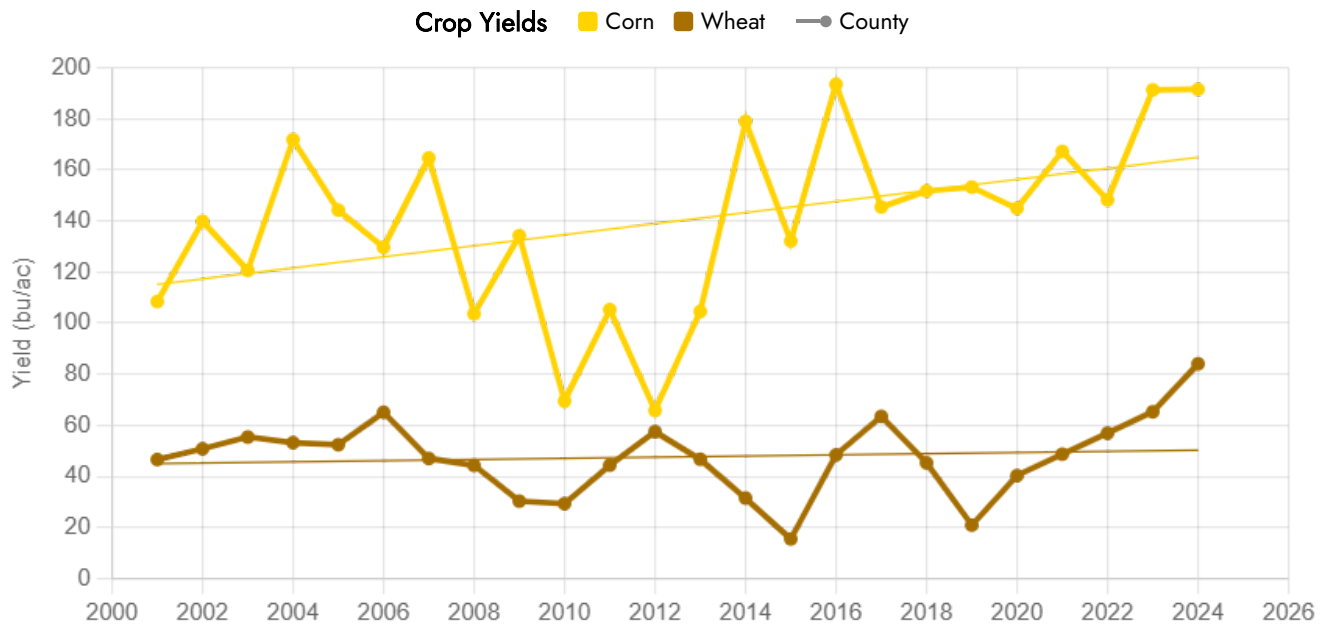
FARMLAND INSIGHTS

Farmland Statistics for Monroe County, IA for 2023

	Attribute	Year	Value
IA Average	Farmland Value (\$/ac)	2023	\$9,410
	Cash Rent (\$/ac)	2023	\$269
	Farmland Returns (%)	2023	9.22%
Monroe County Average	Price (\$/ac)	2023	\$5,145
	National Productivity Index (NCCPI3 All Crops)	2023	67
	CSR2	2023	47

RMA Statistics for Monroe County, IA for 2022

Top Crops	Year	Expected Yield (bu/ac)	APA Trend Adjustment (bu/year)
Corn	2022	147.0	1.83
Wheat	2022	41.8	0



FarmWorth, LLC makes no warranties, express or implied, regarding the accuracy of any information provided through FarmWorth.com. User is solely responsible for independently verifying all information prior to use and waives any claims against FarmWorth, LLC arising from inaccuracies in such information.